



# GET CONNECTED

*GPS TRACKING FOR REAL BUSINESS INTELLIGENCE*

## Get Connected

StreetEagle is an advanced GPS tracking solution that **CONNECTS** your operations, your mobile workforce, and your customers to provide total visibility into the service your business delivers. When you're connected, you, your customers, and your workers know exactly what's going on, and everyone makes smart decisions.



### To your Business, being **CONNECTED** means **EFFICIENCY**

- Ensure accurate job times, travel times, and reduce wasted time
- Reduced vehicle operating and fuel expenses
- Eliminate unauthorized vehicle use
- Improve dispatch for efficient routing
- Provide better customer service

### To your Mobile Workforce, being **CONNECTED** means **ACCOUNTABILITY**

- Improved driver safety on the roads
- Increased security
- Advanced communications with dispatch and supervisors
- Reduce false accusations of bad driving or property damage

### To your Customers, being **CONNECTED** means **CONVENIENCE**

- Minimize wasted time waiting for your company to show up
- Appreciation for respecting their time and schedule
- Improved customer satisfaction
- Peace of mind



## Developed and Supported by a GPS Tracking Industry Leader

InSight Mobile Data develops innovative, flexible fleet management and asset solutions that provide real-time visibility into the mobile work environment. For over 15 years, InSight has remained independently operated and employee-owned to preserve a uniquely close and collaborative relationship with our customers, designing customized solutions to meet their specific business needs. Our nationally recognized StreetEagle Tracking Solutions suite provides the ability to capture, analyze and integrate mission-critical data from ALL mobile assets - vehicles, assets and field-based employees - in one fully configurable and user-friendly platform.

Our flagship product, StreetEagle, stands as one of the most capable GPS Tracking Solutions with:

**Proven Performance:** Tens of thousands of installations worldwide, using the most reliable hardware available.

**Flexible:** Any GSM/GPRS or CDMA cellular data network in operation worldwide on over 20 different platforms to meet any requirement.

**Reliable:** Over 99.9% GPS tracking server uptime.

**Guaranteed:** Lifetime hardware warranty with tracking service.

**Supported:** 24/7 Customer Support; online and on-call.

## Complete Visibility on Multiple Devices

StreetEagle provides complete visibility into your Fleets' realtime activity from virtually anywhere. Be it a PC, tablet or mobile device that you use at work, at home, or on the go—StreetEagle helps you stay connected.

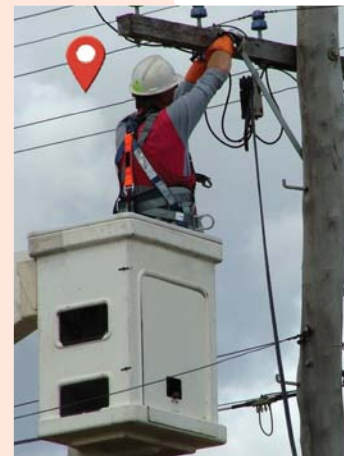
By using a variety of robust mapping applications, StreetEagle not only lends the flexibility for you to choose, but also extends the best mapping coverage available based on your location. Options include Bing Maps, Google Maps, Google Earth, Microsoft MapPoint, MapFrame Maps, and ESRI GIS Overlay.

StreetEagle's extensive product line can meet the needs of any requirement. We offer solutions for any cellular network worldwide, and satellite products for remote tracking, monitoring, and safety.

## Complete Management Solutions

Accountability of your mobile workforce extends beyond the vehicle. StreetEagle offers a variety of GPS devices to effectively track all resources within your fleet including vehicles, equipment, assets, and employees. By managing all resources within a single, robust solution, StreetEagle provides the total business intelligence you need to quickly streamline your mobile operations.

StreetEagle's extensive product line can meet the needs of any company. We offer solutions for any cellular network worldwide, and satellite products for remote tracking, monitoring, and safety.



## StreetEagle Dispatch by Garmin

Integrated Garmin Navigation equipment is designed for managers who want the power of advanced GPS tracking, route dispatching, job management, driver status reporting, two-way messaging and in-vehicle navigation in one complete package.

**Garmin Job Management :** Jobs and routes created within StreetEagle or an integrated business application can automatically be sent directly to the Garmin unit.

**Garmin Messaging:** Communicate with drivers by sending messages and work order information via StreetEagle Software to the Garmin unit.

**Driver Status:** Drivers can easily inform fleet managers and dispatchers of their current status via the Garmin unit.

**Time Clock Reports:** Employees can clock in using the Garmin unit, avoiding a trip to the office and beginning the workday with more prompt and focused customer service.



## Work Management Reports

StreetEagle Work Management Reports provide crystal clear insight into where your mobile workers spend their time, job times, payroll times, and when and where they actually perform service. By integrating Garmin Dispatch communications with workers' location, job locations, and time, you have a precise picture of your mobile workers' activity. With over 34 insightful management reports, StreetEagle provides the Business Intelligence you need to make smart decisions.

**Complete Activity Report\*:** Overview of complete vehicle activity throughout the day including vehicle stops, parks, in-transits, speeding events, idling, and driver status and communications.

**Virtual Time Clock Report\*:** Listing of each location your mobile workers spend time, location type, and time accounting by location type.

**Dispatch History Report\*:** Chronological listing of all communications, job assignments, job status updates, and time clock punches from Garmin Dispatch.

**Garmin Time Clock Report:** Location tagged listing of all time clock punches from Garmin Dispatch.

**Geographic Analysis Report\*:** View arrival/departure times and time spent on-site for any location or geofenced region, for any group of vehicles over any timeframe - essential for accurate job costing analysis.

**PTO Sensor/Proof of Service Report:** Verify service has been delivered from up to 3 PTO instrumented vehicle based systems.

**Fleet Summary Reports:** Provide powerful analysis of vehicle usage habits and workforce activity at jobs and other locations, for the entire fleet, making it easy to identify the performers and those workers needing management attention.

## General GPS Tracking Reports

StreetEagle GPS Tracking reports focus on worker activity, driver behavior, and vehicle usage both during and after working hours. All StreetEagle reports provide the actionable business intelligence you need to cut costs and improve the way you do business.

- Vehicle Idling Report\*
- Vehicle Speeding Report\*
- Vehicle Usage Report
- Vehicle Stop/Park Report
- Inactive Vehicle Report
- After Hours Usage Report
- Data Export Report
- Fuel Tax State Mileage Report\*
- Maintenance Due Report

**StreetEagle PROFESSIONAL**  
Virtual TimeClock Report  
Vehicle: Focus Debbie  
From: 2/28/2012 12:00:00 AM  
To: 3/8/2012 12:00:00 AM

**StreetEagle PROFESSIONAL**  
PTO Report  
Vehicle: J-101  
From: 3/8/2012 12:00:00 AM  
To: 3/8/2012 4:10:45 PM

**StreetEagle PROFESSIONAL**  
Virtual TimeClock Report Summary  
From: 12:00:00 AM  
To: 11:59:59 PM

Vehicle	Branch Whse	HQ	In Transi	HQ Garage	HQ Warehouse	Unknown
T1026	21:35:12	371:45:26	168:04:42	00:00:00	00:00:00	02:16:24
T1027	09:49:26	253:43:40	280:18:48	00:00:00	00:00:00	44:10:36
T1028	04:32:32	38:29:46	48:11:12	134:00:44	00:00:00	02:05:50
T1186	30:25:28	552:54:04	82:12:40	02:46:48	00:03:48	05:01:46
T555	24:11:44	467:33:04	142:14:32	05:11:06	00:00:00	22:59:22
T875	17:19:58	453:11:38	119:22:48	97:07:40	00:00:00	07:33:52
T876	06:19:02	585:58:16	30:04:32	47:04:22	00:00:00	00:00:00

**Summary Information**

Location Type	Total Time	Percentage
Unknown	84:07:50	2.06
Branch Whse	114:13:22	2.80
HQ	2723:35:54	66.78
In Transit	870:29:14	21.34
HQ Garage	296:10:40	7.02
HQ Warehouse	00:03:48	0.00

http://www.mds-inc.com support@mds-inc.com 1 of 2

\*Both detailed Vehicle Reports and Fleet Summary Reports available



## Vehicle Maintenance Module

StreetEagle's automated vehicle maintenance provides fleet managers with a hands free reminder of scheduled maintenance events. Triggered email alerts warn managers of upcoming items needing service, and service reports provide a detailed maintenance checklist for your entire fleet.

- Unlimited scheduled maintenance profile definitions for oil changes, tires, inspections, etc.
- Schedule based on any combination of elapsed mileage, engine operating time, and/or calendar time.
- Total engine operating time and vehicle odometer synced within StreetEagle allows managers to determine the longevity of the vehicles in your fleet.

## Be Alerted. Stay Notified. Respond Fast.

When something goes wrong on the road or on the job, rapid notification makes all the difference. StreetEagle alerts you instantly when it detects a predefined condition that requires an immediate response.

**Speeding Alert:** Improve driver safety and fuel efficiency

**Idling Alert:** Monitor vehicle idling time to cut fuel costs and reduce employee downtime

**Geofence Alert:** Monitor when vehicles enter/exit a virtual perimeter around a geographic location

**Motion Alert:** Identify unauthorized vehicle use with instant alerts when your vehicles are utilized outside of normal operating hours

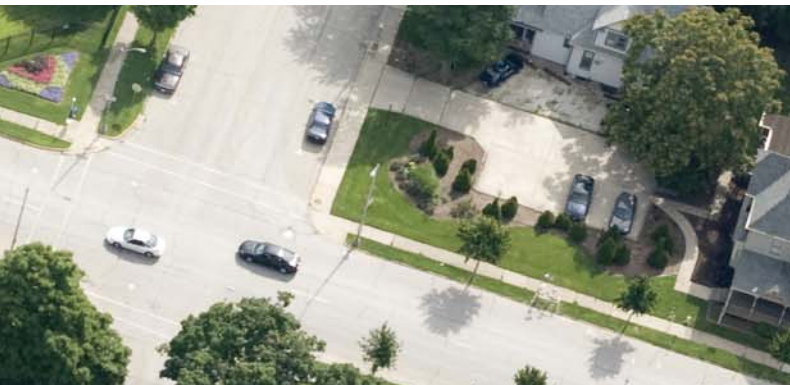
**First Movement of Day:** Notification of your employees' daily clock in

**PTO Activation Alert:** Monitor when external vehicle systems are activated

**Analog Sensor Alert:** Alerts for analog sensor measurements of temperature, tank pressure, fuel levels, etc.

**Tampering Alert:** Prevent tracking downtime due to driver tampering

**Long Stop Alert:** Keep your drivers on the move and on task





## StreetEagle Transit



StreetEagle Transit is an advanced transit system solution, which utilizes the power of StreetEagle to connect public transit drivers, customers, and managers. It provides a solution in which managers have complete visibility into their fleet, drivers are empowered to communicate data/key information back to their home office and customers are constantly informed of the availability of vehicles through a wide range of communication options.

**Public Viewer:** Designed for large high definition displays, the public viewer can be displayed in public locations where it can rotate different views of the active transit system to order to provide student and customers with accurate locations of vehicles.

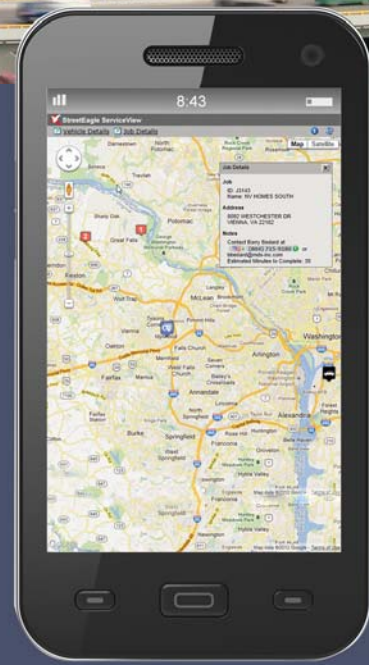
**Mobile App:** Optimized for iPhones and Android devices the Mobile App allows for your ridership the ability to access real-time tracking data plotted on visually informative and appealing maps.

**Route Designer:** This online tool allows managers the ability to modify and change the public viewer and mobile app graphic displays to fit their organizations needs and requirements.

**StreetEagle Transit Module:** An additional module added to the StreetEagle interface allows for setup and monitoring of the transit tracking solution, ability to assign buses to routes, review detailed reports of service and setup/maintain alerts and notifications for route service

**Advanced Optional Features Include:** Manual and automated passenger counting, Garmin route assignment and messaging, and onboard Wi-Fi hotspot.





## StreetEagle ServiceView

Enrich your customers' service experience by providing automated conveniences with StreetEagle ServiceView. When managing and dispatching jobs to your mobile workforce, you can now automatically send a ServiceView link to each customer. Customers can view this link on their computer or smartphone to see:

- The general location and status of the driver/technician in real-time
- Assigned jobs in order for the driver/technician for that day
- Their job order (e.g. 3rd in line, scheduled for 2:00 PM)



## StreetEagle Asset Tracking

Effectively managing your mobile resources extends beyond your fleet of vehicles.

**StreetEagle PULSE:** Affordable asset tracking solutions that are fully ruggedized to withstand virtually any environment. With an exceptional 7-year battery life and simple bolt-on installation, StreetEagle PULSE makes it easy to reliably track your mobile assets and equipment in the field.

**StreetEagle Loceight:** Asset tracking solutions based on the Globalstar simplex satellite network for remote monitoring. Semi-ruggedized design, simple bolt-on installation, internal vibration sense, and advanced monitoring options for runtime reporting and automated maintenance.



## StreetEagle Barcoding

StreetEagle Barcoding provides fleet owners with the ability to effectively manage assets and equipment in the field. By integrating with best-in-class wireless barcode scanners from Motorola, StreetEagle transmits all scanned information in real-time. Managers can thereby track assets in the field with each scan, providing location, date/time, and proof of service. The vehicle operator quickly scans the barcode on each asset when servicing, delivering, or picking-up. StreetEagle Barcoding allows managers to:

- Ensure servicing of assets
- Provide proof of service to customers
- Obtain locations of all assets in the field
- Effectively track pick-up, delivery, and servicing of assets
- Manage inventory of assets ready for delivery



## Flexible Solutions

StreetEagle is not a 'one size fits all' solution, but a range of solutions that gives you just what you need. Integrated with many popular Schedule/Dispatch software applications used in a variety of industries, StreetEagle provides business tailored solutions to any organization at an off-the-shelf price.

- **Flexible Plan Options:** Month-to-month software as a service, term contract subscription and self-hosted enterprise solution available
- **Flexible User Interface Options:** Connected PC, smart phone, and tablet device capable
- **Flexible Hardware Options:** Compatible with the most widely used GPS modem hardware, including all models of CalAmp, Enfora, BlueTree Wireless, and Sierra Wireless
- **Flexible Mapping Options:** Users can choose any of the popular mapping options, with road maps, aerial, or satellite imagery, including Google Maps, BING Maps, Google Earth, and Microsoft MapPoint
- **Flexible Communications Network Options:** Worldwide GSM/GPRS/HSPDA, CDMA / 1X / EVDO / LTE, and Globalstar

## Business Software Integration

StreetEagle easily integrates with most back office work management software applications through our powerful web services API, providing in-vehicle Garmin dispatching to your drivers, job and vehicle mapping within your work management software, and service arrival notification to your customers.



Scan to visit



[insightmobiledata.com](http://insightmobiledata.com)

T: (301) 866-1990 F: (301) 866-1992  
23330 Cottonwood Parkway, Suite 333  
California, MD 20619  
[www.insightmobiledata.com](http://www.insightmobiledata.com)  
[info@insightmobiledata.com](mailto:info@insightmobiledata.com)