



INSIGHT
Mobile Data

Real-time visibility into the mobile work environment



StreetEagle® LiveCam

Capturing live video of driver behavior to reduce accidents and improve company safety performance

StreetEagle LiveCam reinforces InSight Mobile Data's commitment to help organizations with mobile resources build a culture of safety by providing drivers with tools that protect and empower them. LiveCam is a high-capacity digital recorder that mounts on the inside windshield and captures interior and exterior views of the vehicle. Fleet managers can access a live feed or historical video (and optional audio) clips of any driver in action, which can be used for driver coaching, insurance claims, legal disputes and much more.

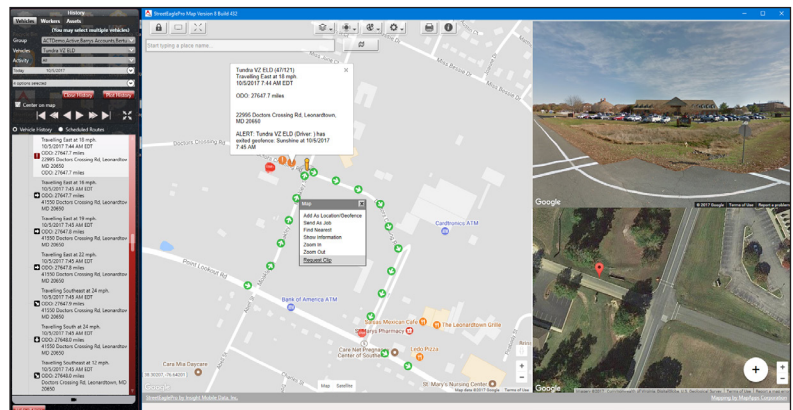
But beyond all those benefits of real-time, in-cab video, what sets LiveCam apart is how seamlessly it integrates into the StreetEagle software platform. Any basic mounted camera can capture video – but having that video accessible from a vehicle history report, or any point on a map, or through a link in an email alert makes all the difference for a supervisor trying to gather critical, real-time about a specific incident or violation.

LiveCam helps you protect your drivers, and your reputation, by delivering:

- Accurate, real-time insight into your drivers' behavior and adherence to safety practices
- Access to historical video footage to analyze past driver behavior events
- Integration with StreetEagle to view relevant video clips from multiple points in the software (reports, alerts, maps)
- Opportunities to coach drivers using actual video footage (proven to improve driving performance)
- A perfect complement to electronic logbooks (ELD) for safety compliance and liability protection
- Reductions in company accidents, insurance premiums, and repair costs to boost your bottom line
- Protection for drivers, and the entire company, from insurance risk and false accident claims



The Dual-Vision XC4 Continuous HD Video and Event Recorder, by Rosco® Vision Systems



StreetEagle LiveCam provides live video, as well as links to watch clips associated with historical events directly from the map, email alerts and reports.



Easy to manage video, and gain access to it from anywhere:

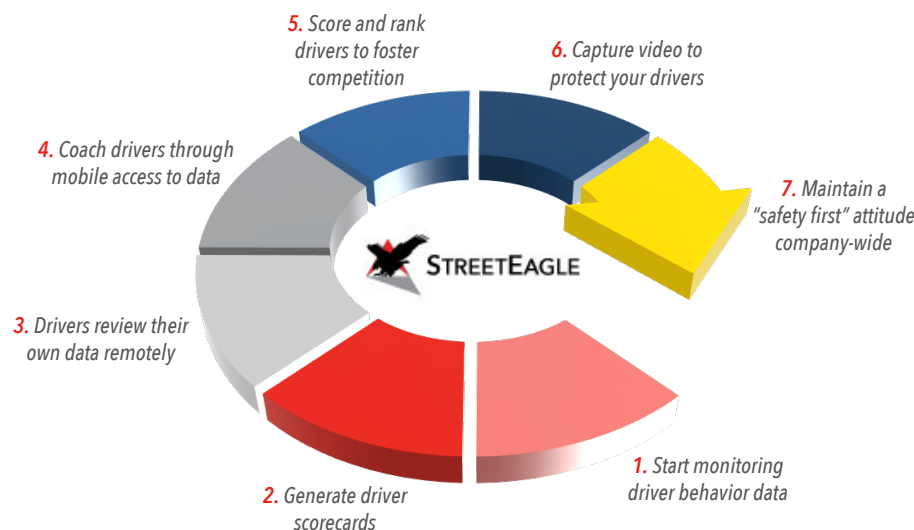
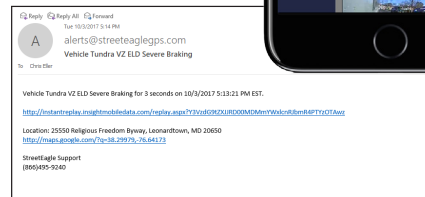
LiveCam provides a live video feed, in real-time and on-demand, whenever you need it.

Additionally, LiveCam integrates video into your StreetEagle software interface, allowing you to:

- Access a video clip from any vehicle shown on the map
- Request video clips associated with events on StreetEagle reports
- View clips from any device, on the go, from email and text alerts

The statistics cited below indicate when organizations invest in vehicle cameras **and pair them with driver coaching** they experience significant benefits, both tangible and intangible. Besides reducing accidents and their associated costs (repairs, insurance premiums, vehicle down time), drivers are also provided an extra layer of protection against false accident claims, while managers/owners are given a powerful tool to help manage risk.

*With LiveCam,
view video from
any vehicle, from
any mobile device –
whenever you
need to.*



Building A Culture of Safety

StreetEagle is a software platform designed to facilitate and reinforce your organization's established safety standards. LiveCam is part of a full suite of safety-first features that complement each other and provide managers and supervisors with accurate data to coach drivers and, importantly, recognize exceptional performance. And giving drivers access to their own data through myScore allow them to track their own metrics and engage in healthy competition with their peers completes the safety cycle.

The bottom line on camera systems: significant cost savings and risk reduction



According to a Federally-funded study conducted at Virginia Tech's Transportation Institute:

- **90%** of all crashes are caused by human error
- Safety-related events (hard braking, sudden swerving or aggressive acceleration) declined by **52%** for companies that had in-vehicle cameras installed

These statistics reveal a major opportunity for fleets to reduce accidents by coaching drivers with video – and save thousands on repair costs, legal fees and insurance premiums.