



Real-time visibility into the mobile work environment



## Reducing Risk and Improving Operations with Pest Control Fleet Management

Give your mobile workers the mobile tools, driver safety training and field-to-office connectivity to deliver superior pest control service

In the pest control industry, so much depends on the productivity, performance and technical capability of your technicians in the field. It's critical to know exactly how they use their vehicles, where they go with them (both on and off business hours), and how much risk they are exposing you to through unsafe driving habits. In addition, your techs need to be empowered to work more efficiently through technology that keeps them connected to the back office, and informed of the most accurate job and route information. Safety, connectivity, efficiency – critical elements for your pest control company to separate itself from the competition, all delivered through one solution: StreetEagle® pest control fleet management.



### Monitor, coach, improve and promote driver safety

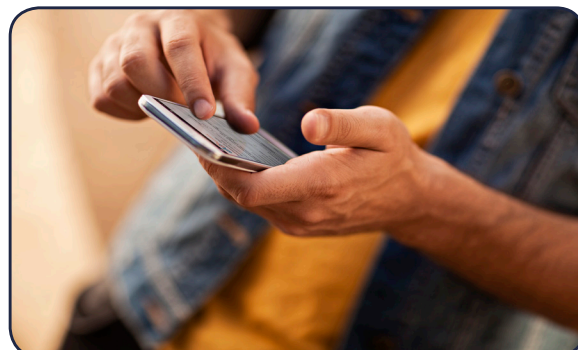
The way your employees use the vehicles they're assigned to can have a huge impact on the kind of service you provide, and on your bottom line. Behaviors like speeding, idling, hard braking and distracted driving need to be captured, monitored and coached to increase safety and efficiency in the field. InSight has a Complete Fleet Safety Program designed to reduce your risk and help build a culture of safety within your organization.

### Capture and communicate critical job data instantly

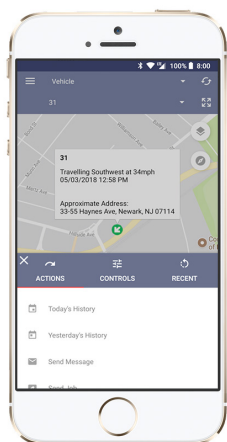
StreetEagle pest control fleet management software is fully integrated with digital forms technology, so when your techs are on site they can capture important job-related information (including photos, signatures and contracts) and relay it back to the office instantly. Digital forms allow you to more work efficiently and less wastefully, and all job data is time and location stamped so you've got a complete picture of work activity at any specific site and moment.

### Dynamic dispatching to maximize efficiency

Your technicians have many stops to cover during their work days, and can't afford to be slowed down waiting for route directions, notes or other critical job-related data. With StreetEagle pest control fleet management, dispatchers can dynamically send instructions to mobile workers no matter where they are – right from within the software. And with the StreetEagle Mobile App, you can also keep track of worker activity, vehicle history, vehicle events and alerts from wherever you are, at any time.



# StreetEagle® for Pest Control Fleet Management



## Instant notification of off-hours vehicle use

Since many pest control technicians take their vehicles home with them when off duty, it makes perfect sense for owners and managers to be able to stay informed of usage during non-business hours. Whether using StreetEagle via desktop or your mobile device, you can instantly know any vehicle's history, current location or recent activity – and be notified automatically when usage is against established company policy.

## Monitor sprayer usage

StreetEagle pest control fleet management integrates seamlessly with PTO monitors to keep track of various functions associated with the vehicle – which can be especially useful

to measure sprayer usage. As with engine idling (which can also be monitored and reported on using StreetEagle), unmonitored use can lead to wasteful practices that can take a real bite out of the bottom line. Your visibility extends far beyond vehicle location to actual work practices and events to give you a much clearer picture of performance in the field.



## Does monitoring driver behavior and safety really impact the bottom line?

InSight's Complete Fleet Safety Program provides pest control organizations with true safety expertise that goes the extra mile to prevent and reduce crashes and accidents that put your people and organization at risk. Fleet managers and driver supervisors can now effectively reduce driving risks, improve on-road safety, and realize measurable improvements, while managing the fleet's day-to-day operations with confidence.

The chart pictured here shows how one pest control company reduced "at fault" crashes and associated losses after partnering with InSight.

InSight can arm your organization with effective processes and tools to promote, implement and manage fleet safety initiatives. Through this approach, companies realize significant reductions in risky driving behaviors and related vehicle incidents which in turn gains favorable recognition, discounts and the potential for reduced premiums by their insurance carrier.

