

StreetEagle® LiveCam Driver Camera Systems

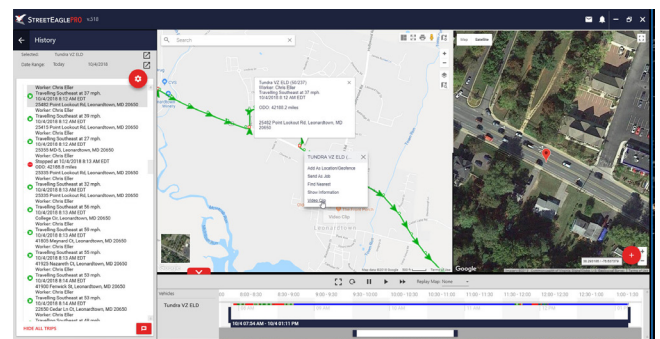
Capturing live video of driver behavior to reduce accidents and improve company safety performance

StreetEagle LiveCam reinforces InSight Mobile Data's commitment to help organizations with mobile resources build a culture of safety by providing drivers with tools that protect and empower them. LiveCam in cab cameras offer multiple on-board camera configurations, mounted on dashboards or other strategic locations on the vehicle, depending on what you need to capture. Fleet managers can access a live feed or historical in cab video (and optional audio) clips of any driver in action, which can be used for driver coaching, insurance claims, legal disputes and more.



LiveCam in cab video helps you protect your drivers, and reputation, by delivering:

- Accurate, real-time insight into your drivers' behavior and adherence to safety practices
- Access to historical in cab video footage to analyze past events
- Integration with StreetEagle to view relevant video clips from multiple points in the software (reports, alerts, maps)
- Opportunities to coach drivers using actual video footage (proven to improve driving performance)
- Reductions in company accidents, insurance premiums, and repair costs to boost your bottom line
- Protection for drivers, and the entire company, from insurance risk and false accident claims



StreetEagle LiveCam provides live video, as well as links to watch clips associated with historical events directly from the map, email alerts and reports.



Easy to manage video, and gain access to it from anywhere

LiveCam driver cameras provide a live video feed, in real-time and on-demand, whenever you need it. LiveCam also integrates video into your StreetEagle software interface, allowing you to:

- Access in cab video clip from any vehicle shown on the map
- Request video clips associated with events from Reports
- View clips from any device through email and text alerts

LiveCam: Multiple Camera Configuration Options

InSight will help you decide which driver cam solution is right for your fleet

Depending on the level of liability protection and safety monitoring your fleet and organization require, you may find yourself needing a more complex driver cam configuration – or, a simple one. InSight has a variety of solutions that can be configured and installed to deliver the exact in cab video you need to capture, and make that video accessible to your team either in or out of the office.

Which LiveCam configuration is right for your operation? The descriptions below should help guide you as you decide how much in cab video you need to capture, whether multiple-camera set-ups are important, and whether you need to focus on video only or are looking for other capabilities from your driver cameras (such as simple vehicle tracking).



LiveCam – Multiple Cameras, Inside and Outside

For operations that are looking for a more sophisticated, multi-camera configuration for their vehicles, this may be the best option. The basic configuration includes a dashboard-mounted, dual-facing driver cam (records both inside and outside the vehicle) and a high-capacity DVR. It also provides the ability to connect to multiple auxiliary driver cameras, such as side view, rear-view, backup with in-cab video monitor and interior dome cams. If your organization includes activity both in and around the vehicles that you need to monitor, or if you need all-around coverage for proof of service, liability protection and/or performance evaluation, this is your best configuration.

LiveCam Trackable Camera

If a simpler, “all in one” in cab camera solution makes the most sense for your needs, this configuration will fit the bill. The easy to install solution is comprised of a single-view (front-facing) cab cam with built-in vehicle tracking capabilities. In addition, you can add one (1) driver-facing camera but not side, dome, rear or backup cameras. As part of the LiveCam family, it is fully integrated with the StreetEagle platform complete with alerts, reports, and mobile (smartphone or tablet) access – making it the perfect choice for a simple, cost-effective multi-purpose solution.



Building a Culture of Safety

All LiveCam driver camera solutions are part of a full suite of fleet safety features and services that complement each other and provide managers and supervisors with accurate data to coach drivers and, importantly, recognize exceptional performance. Driver behavior analytics, “gamified” apps for driver scoring and competition, and fleet risk reporting are all available within the StreetEagle software platform.

For more information, call **301-866-1990** or visit **www.insightmobiledata.com**.